

Initial Coordination Report

Report Date: Tue 11-Jun-2019

Headlines

	W19 Init Coord	vs. W18 Init Coord	vs. W19 Hist (SHL)
Total Air Transport Movements (Passenger & Freight)	118,836	▲ 3.2%	▲ 6.8%
Total Passenger Air Transport Movements	118,836	▲ 3.2%	▲ 6.8%
Total Passenger Air Transport Movement Seats	23,327,277	▲ 4.0%	▲ 8.3%
Average Seats per Passenger Air Transport Movement	196.30	▲ 0.8%	▲ 1.4%
Percentage of allocated slots cleared as requested (OK)	88%		

Contents

Page	Content
2	Runway Scheduling Limits
3	Coordinator's Report
4	Peak Week - Initial Coordination Analysis
5	ATM Allocation by Operator (Full season and Peak Week Comparison)
6	Peak Week - Allocation and Slot Adjustment Distribution by Operator
7	Significant Route Changes
8	Full Season - PATM Seats Analysis
9	Full Season - Terminal Analysis
10	Full Season - Aircraft Size Analysis
11	Full Season - Seasonality
12	Peak Week - Initial Hourly Runway Demand
13	Peak Week - Hourly Runway Allocation
14	Peak Week - Hourly Runway Allocation Comparison (W19 Init Coord vs. W18 Init Coord)
15	Peak Week - Hourly Runway Allocation Comparison (W19 Init Coord vs. W19 Hist (SHL))
16	Peak Week Histogram - Departure Passengers (T60/30) - North Terminal - All Operators
17	Peak Week Histogram - Departure Passengers (T120/30) - North Terminal - All Operators
18	Peak Week Histogram - Arrival Passengers (T60/30) - North International - All Operators
19	Peak Week Histogram - Arrival Passengers (T60/15) - North Domestic - All Operators
20	Peak Week Histogram - Departure Passengers (T60/30) - South Terminal - All Operators
21	Peak Week Histogram - Departure Passengers (T120/30) - South Terminal - All Operators
22	Peak Week Histogram - Arrival Passengers (T60/30) - South International - All Operators
23	Peak Week Histogram - Arrival Passengers (T60/15) - South Domestic - All Operators
24	Glossary

W18 scheduling season runs from Sun 28-Oct-2018 to Sat 30-Mar-2019 (154 days).

W19 scheduling season runs from Sun 27-Oct-2019 to Sat 28-Mar-2020 (154 days).

Disclaimer

No warranty whether expressed or implied as to the completeness, accuracy, fitness for purpose, or satisfactory quality is given by ACL regarding the information in this report, which is provided by third parties. Accordingly, ACL excludes all liability with regard to such data.

The contents of this report may not be reproduced without the written consent of ACL.

Coordinator's Report



Total demand	125,762	slots		
Total slots allocated	118,836	slots	94.49%	of total demand
Number of slots cleared OK	104,203	slots	87.69%	of total slots cleared

Slots adjusted (not OK) due to:

RUNWAY constraints	13,656	slots	93.3%	of total slots adjusted
TERMINAL constraints	49	slots	0.3%	of total slots adjusted
STAND constraints	-	slots	0.0%	of total slots adjusted
NIGHT constraints	254	slots	1.7%	of total slots adjusted
OTHER constraints	-	slots	0.0%	of total slots adjusted
ARR/DEP TURNAROUND feasibility	674	slots	4.6%	of total slots adjusted

Executive Summary

Capacity demand was strong across most hours and days of the week with demand peaking at 66 movements in the 0800 hour. The new entrant requests were received from Air Arabia, Aegean Airlines, Royal Air Maroc, Air Baltic, Air China, China Airlines, Freebird Airlines, Icelandair, Garuda Indonesia, Azal Azerbaijan Air, Jazeera Airways, Air Malta, China Eastern Airlines, Philippine Airlines and Air Tanzania.

Average seats has increased year on year to 196.3 per movement, up respectively from 193 in W17 and 194.69 in W18 at Initial Coordination. Allocated slots are up to 94.49% of total demand and of those 87.69% are cleared OK.

The most commonly hit constraint was runway capacity, with most of the day's Totals R60 being filled. All carriers with night allocation have had their slots confirmed in the night. It is the carrier's responsibility to bring their allocation down in line with their Quota Allocation.

Runway Constraints

- ACL made the following requests to GAL to flex arrival and departure capacity. This flex enabled us to clear a full season departures in the airlines requested hours.
- GAL approved each of the changes as below:
- d7 1200hr 27A/26D/51T to 26A/27D/51T, d1-5 1100hr 27A/28D/50T to 26A/29D/50T, d1-5 1700hr 26A/26D/46T to 25A/27D/46T

Terminal Constraints

- The only slots adjusted due to terminal capacity are re-times requested by EZY. The total of 49 slots.
- Slots allocated within 60 minutes off requested time.

Stand Constraints

No Stand Constraint issues.

Night Constraints

- Airlines without historic allocation were allocated closest slots available, except PR, TC and CA on day 6 where the closest slot available was within the night period.
- These slots are currently T coded and subject to review of night quota available for historic allocation.

Other Constraints

No Other Constraint issues.

Arr/Dep Turnaround Feasibility

- The primary reason code was due to runway availability, therefore slots in turnaround format were adjusted.

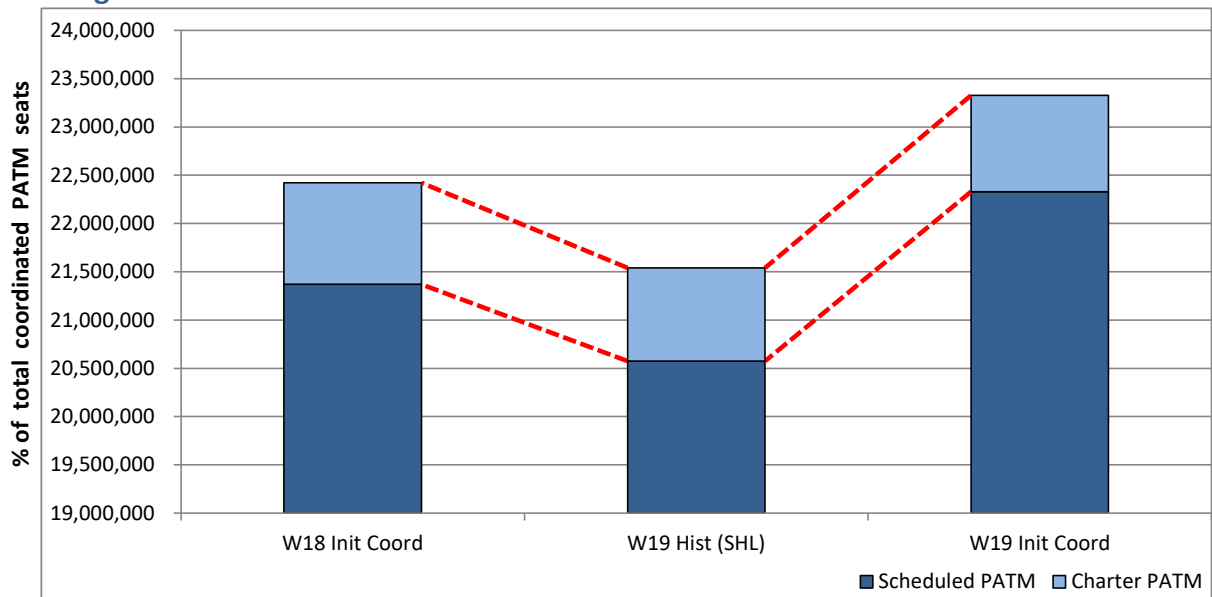
Significant Route Changes

Operator	Category	Description of change from W18 schedule to W19 schedule
Air Arabia Maroc	NEW	Service to AGA
Air China	NEW	Service to PVG
Air Malta	CHANGE	Increased service to MLA
AIR TANZANIA Corp	NEW	New carrier operating to JRO
British Airways	NEW	Services to BGY, BIO, DLM, KAO, LPA
British Airways	CHANGE	Increased frequency to GVA, NCE, OPO, VCE
British Airways	CHANGE	Reduced services to BCN, FDH, FLL
British Airways	CANCELLED	Services to VIE, VLC
EasyJet	CHANGE	Increased services to BUD, DUS, FAO,FCO, GNB, GVA, INN, MRS, NTE, PMI, RMU, TRN
EasyJet	CHANGE	Reduced service to MJV
EasyJet	CANCELLED	Services to ABZ, WAW
Jazeera Airways	NEW	New carrier operating to KWI
Norwegian	CHANGE	Increased service to MAD
Norwegian Air UK Ltd.	NEW	Services to BKK, GIG, SFO
Norwegian Air UK Ltd.	CHANGE	Increased services to JFK, GOT
Norwegian Air UK Ltd.	CANCELLED	Services to FLL, OAK
Royal Air Maroc	NEW	Service to RAK
Ryanair	NEW	Services to AGP, WMI
Ryanair	CHANGE	Increased service to ALC
Thomas Cook (UK)	NEW	Service to RAK
Thomas Cook (UK)	CANCELLED	Services to MCO, PMI, RVN
Travel Service	CHANGE	Inreased service to PRG
TUI Airways	NEW	Services to FMM, SID
TUI Airways	CANCELLED	Services to LCA, PVR
Virgin Atlantic	CANCELLED	Service to LAS
Vueling	NEW	Services to ALC, OVD
Vueling	CHANGE	Increased services to BCN, FCO
Wizz Air	NEW	Services to BUD, CLJ, GDN

Full Season - PATM Seats Analysis

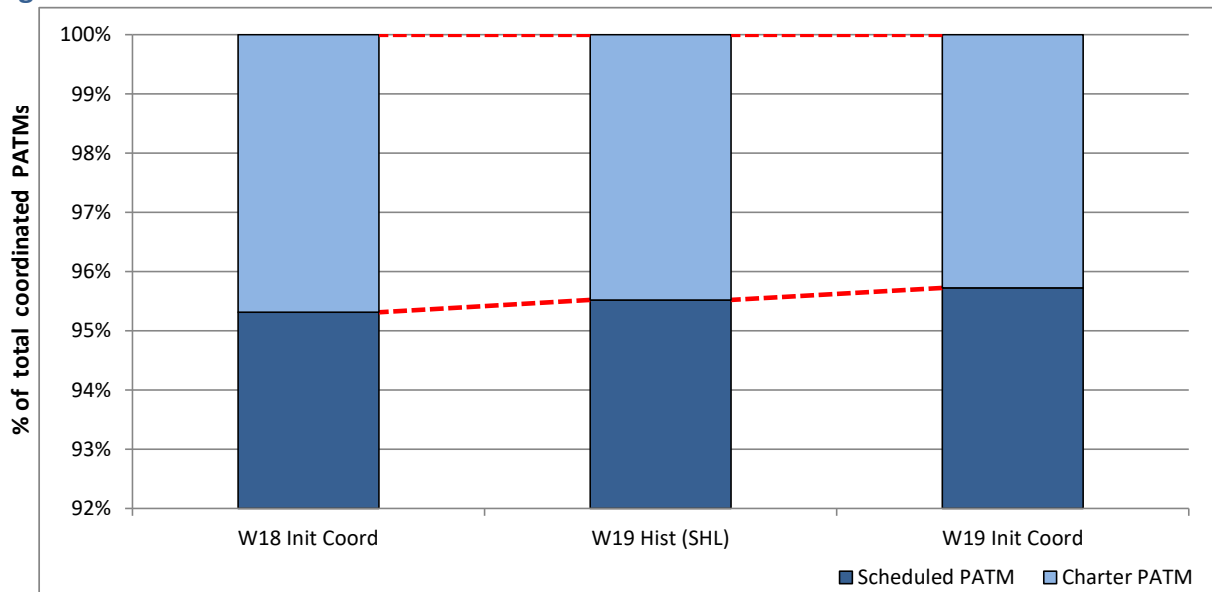


Total Passenger ATM seats: Scheduled vs. Charter



Schedule Snapshot

Passenger ATM seats: Scheduled vs. Charter

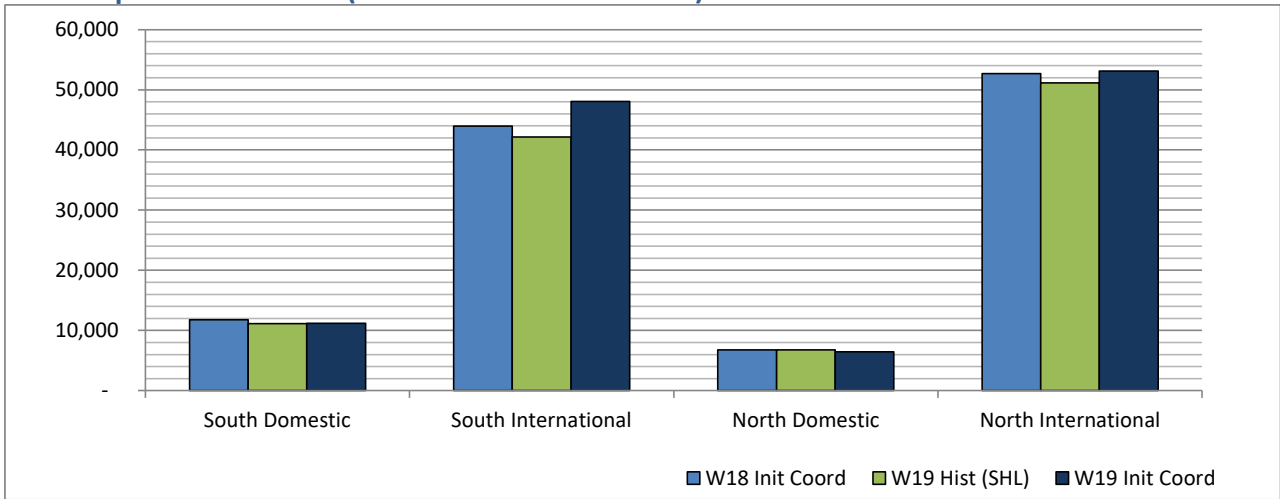


Schedule Snapshot

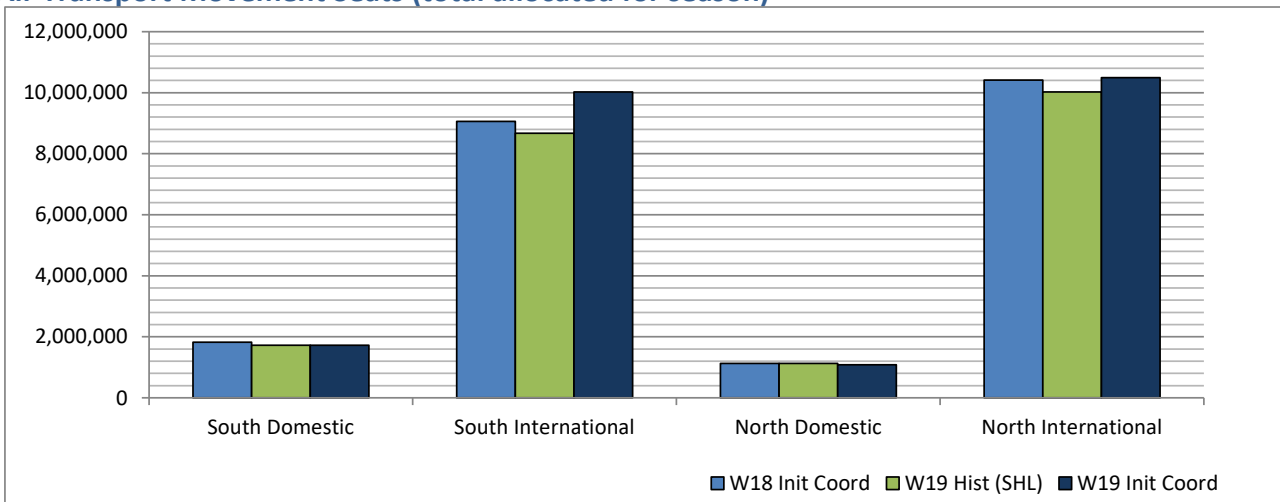
Full Season - Terminal Analysis



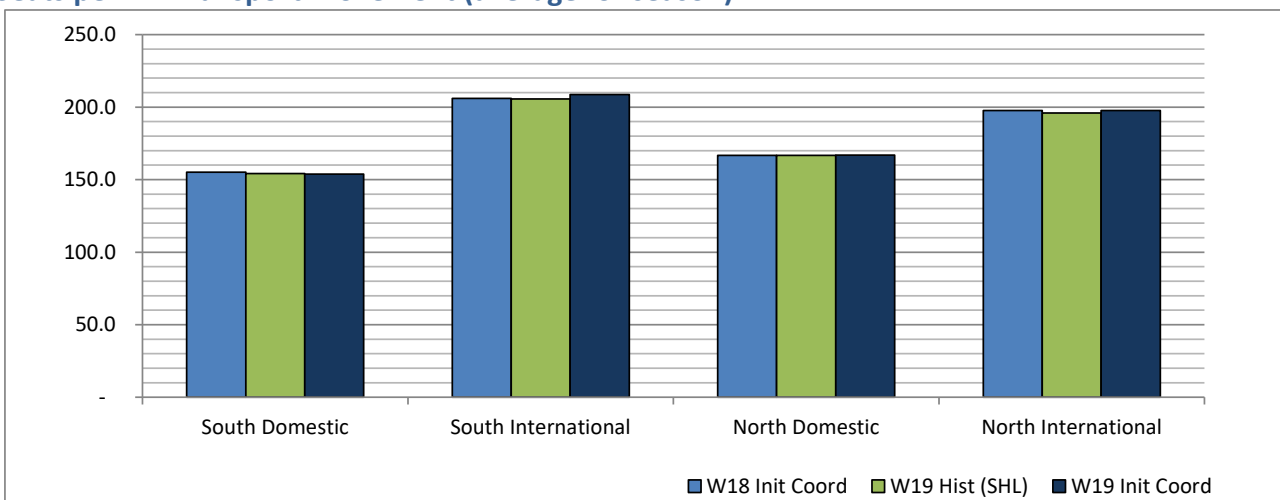
Air Transport Movements (total allocated for season)



Air Transport Movement Seats (total allocated for season)



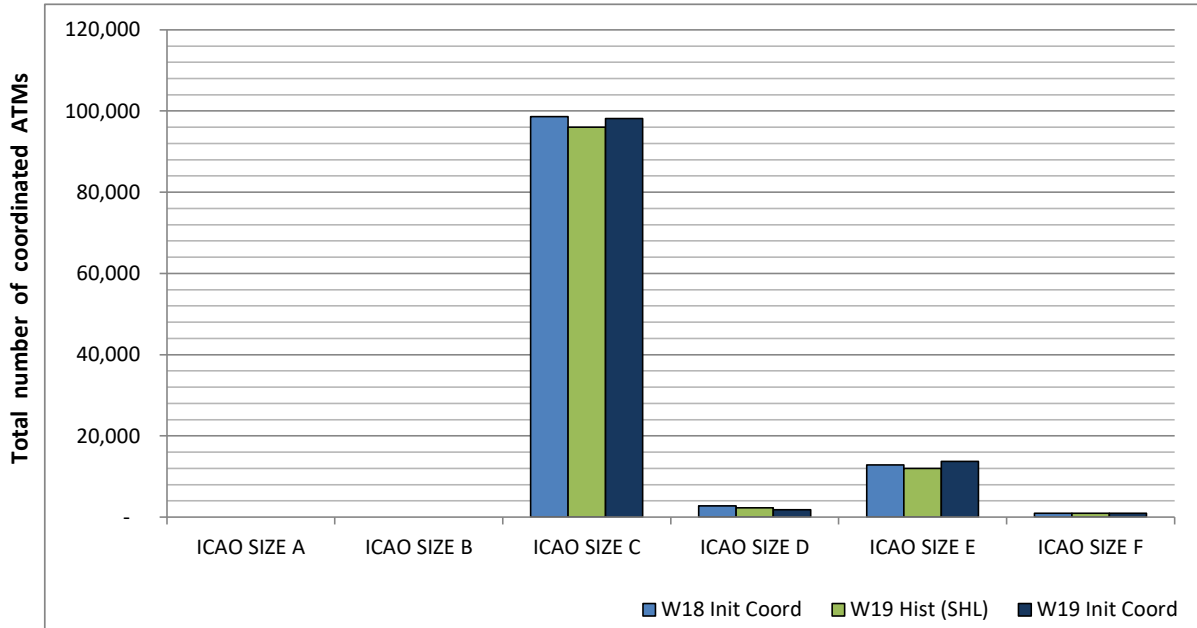
Seats per Air Transport Movement (average for season)



Full Season - Aircraft Size Analysis

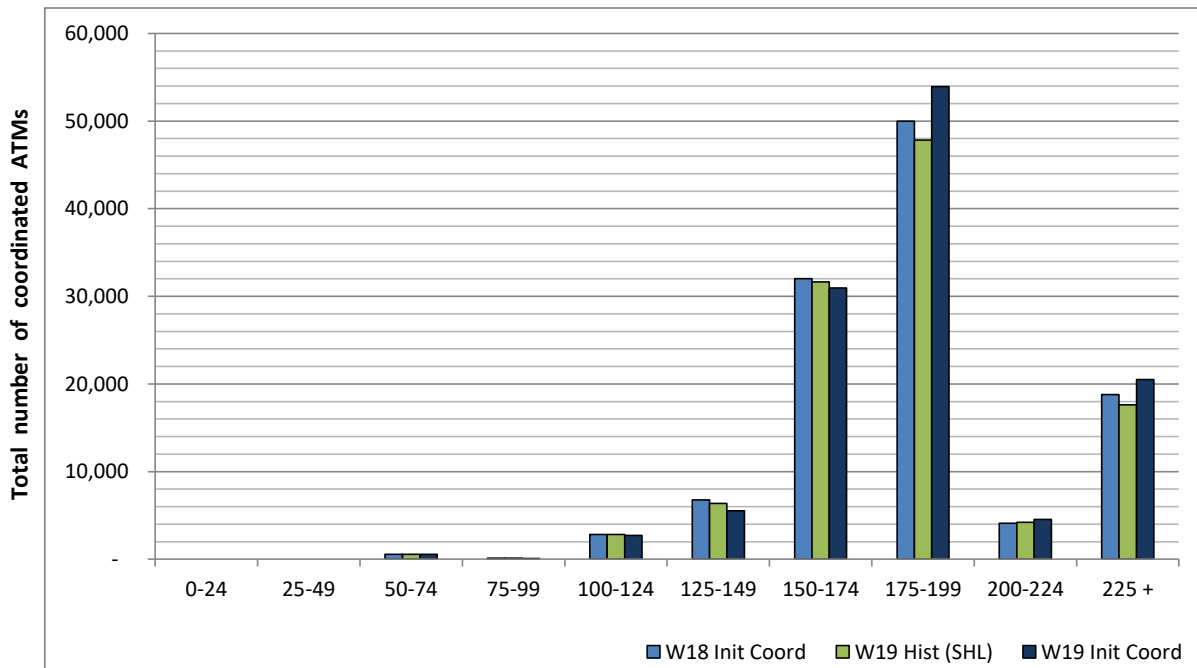


ICAO size designation



Note: See Glossary for definitions of ICAO SIZE groupings

Air Transport Movement seat distribution

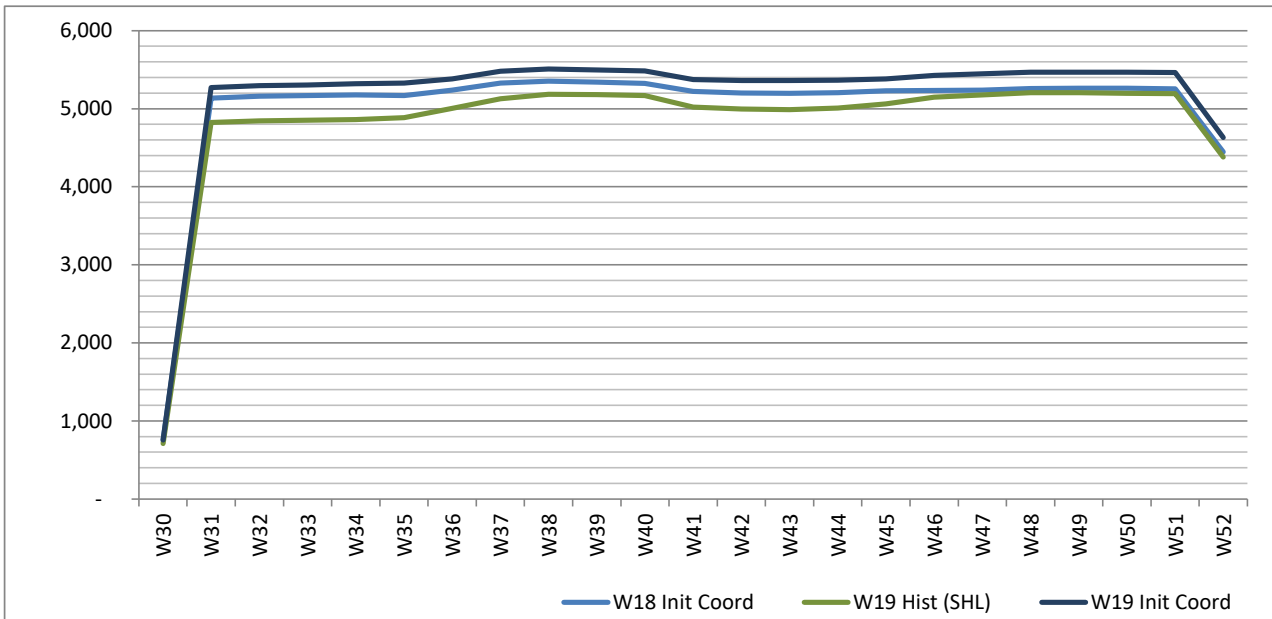


Note: FREIGHT-ONLY services with 0 seats are included in the first seat band '0-24'

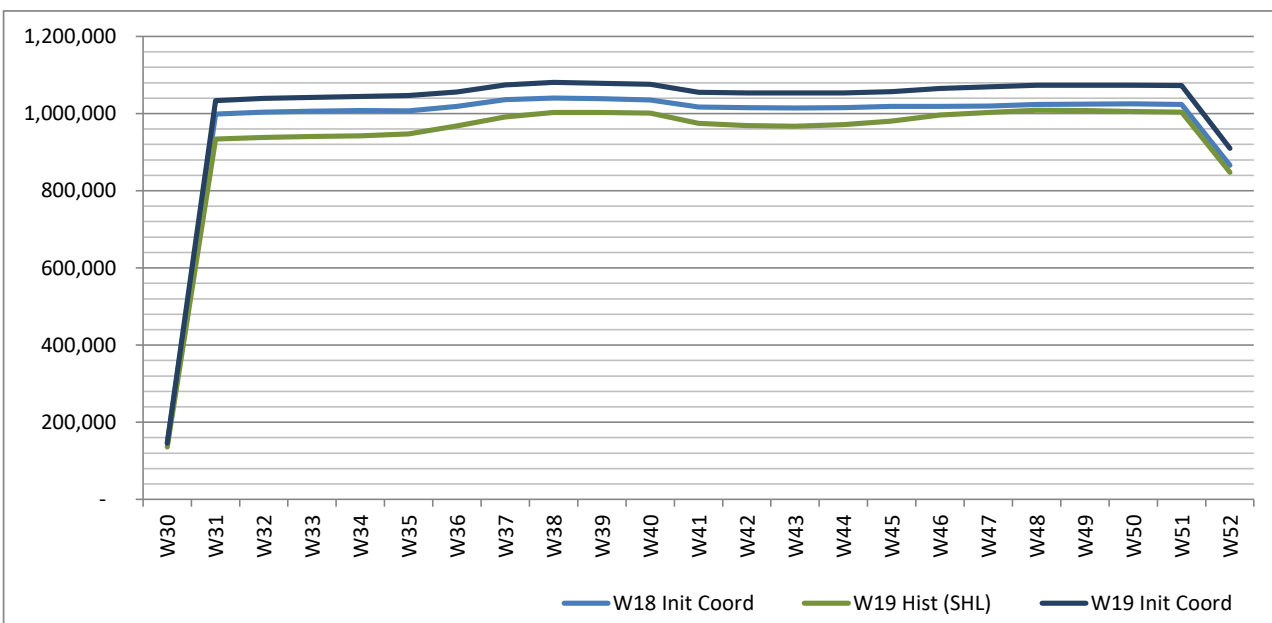
Full Season - Seasonality



Air Transport Movements by week of season



Air Transport Movement Seats by week of season



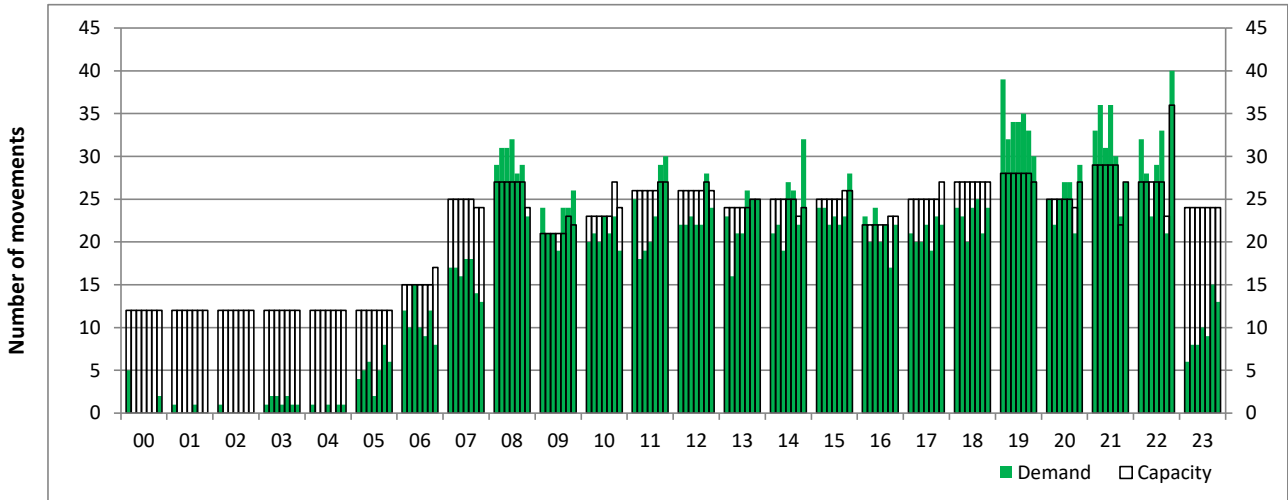
Peak Week - Initial Hourly Runway Demand

Schedule: W19 Init Coord



Hourly Arrival Demand

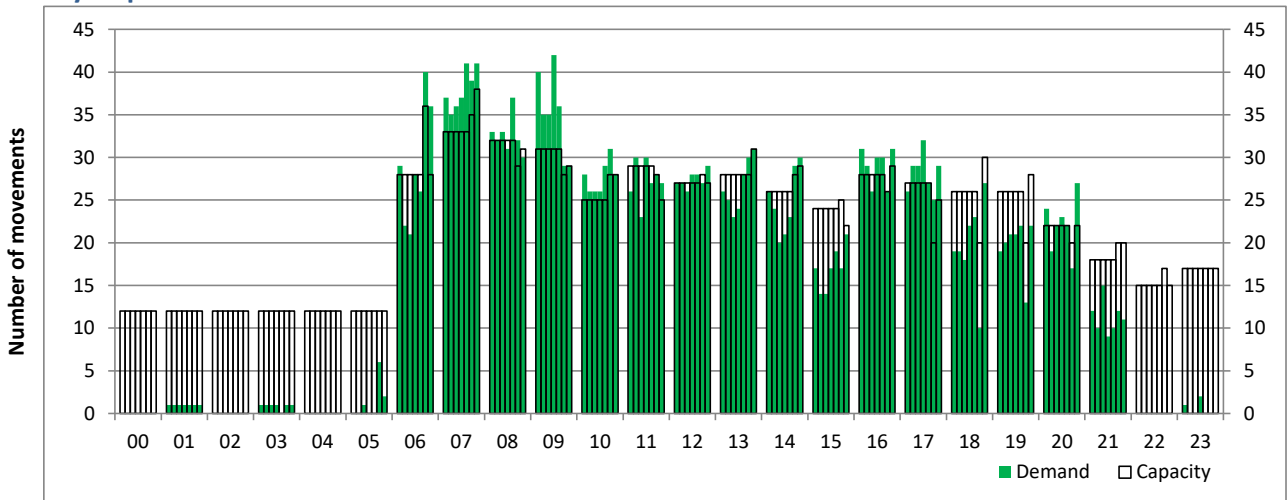
Time: UTC



Hour of day (24 hour format)

Hourly Departure Demand

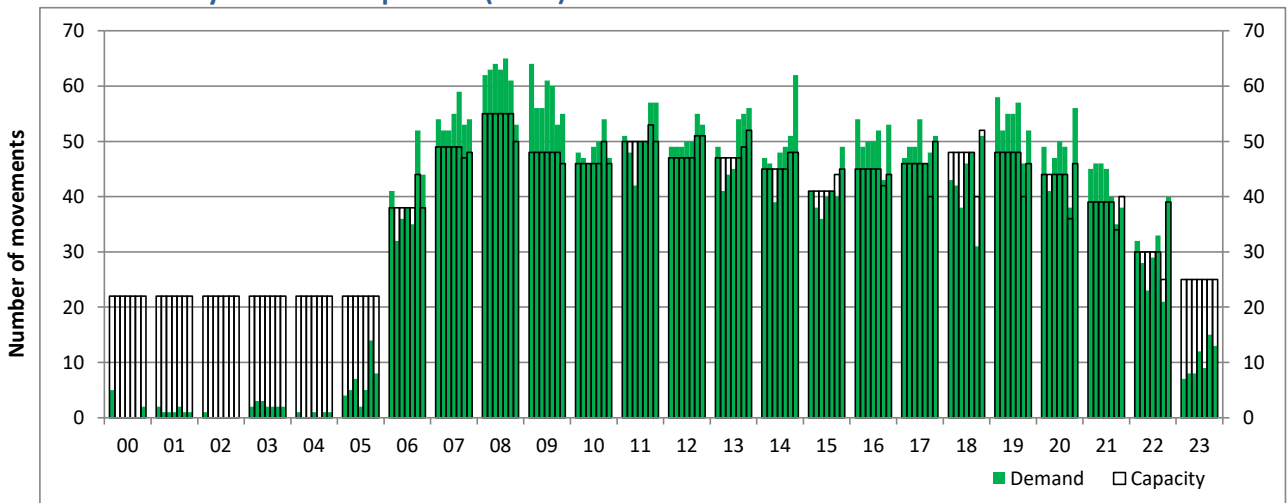
Time: UTC



Hour of day (24 hour format)

Combined Hourly Arrival & Departure (Total) Demand

Time: UTC



Hour of day (24 hour format)

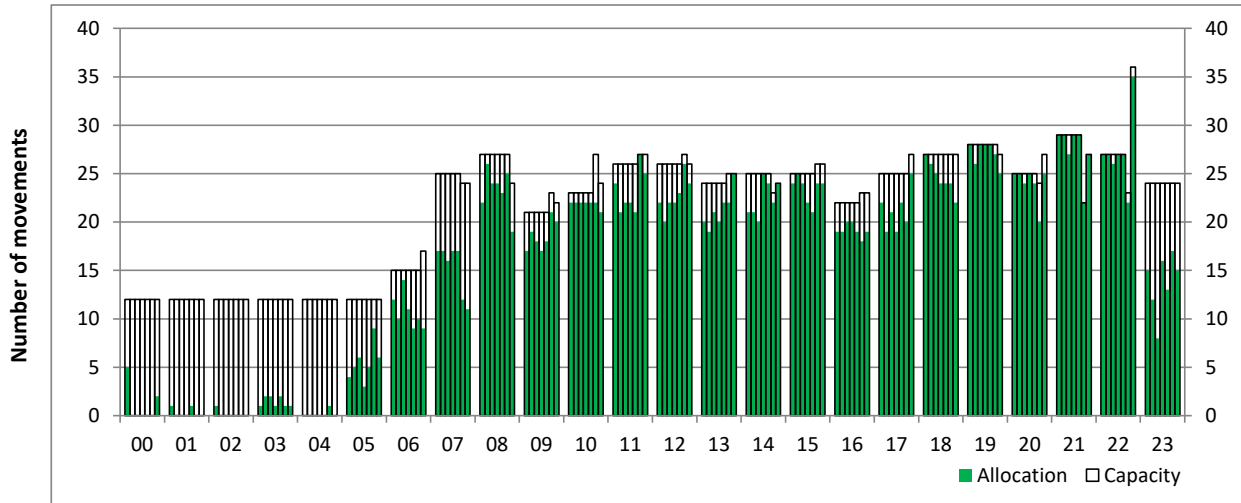
Peak Week - Hourly Runway Allocation

Schedule: W19 Init Coord



Hourly Arrival Allocation

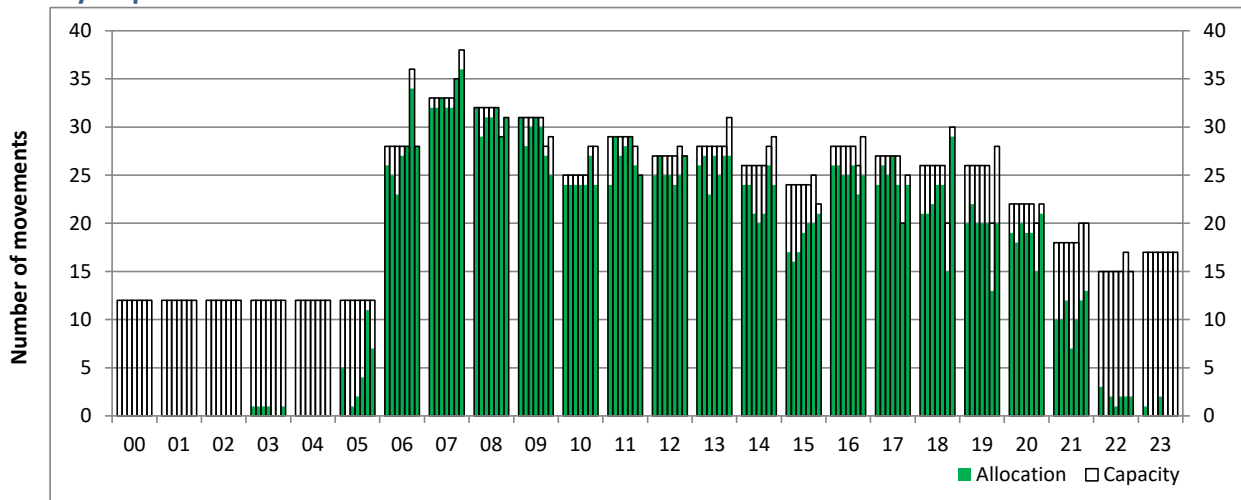
Time: UTC



Hour of day (24 hour format)

Hourly Departure Allocation

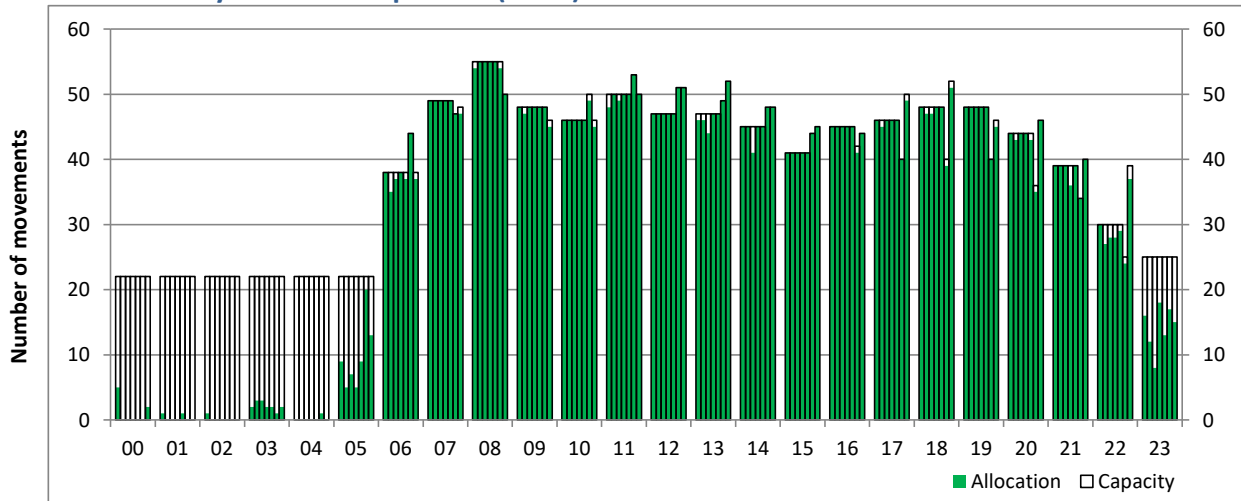
Time: UTC



Hour of day (24 hour format)

Combined Hourly Arrival & Departure (Total) Allocation

Time: UTC



Hour of day (24 hour format)

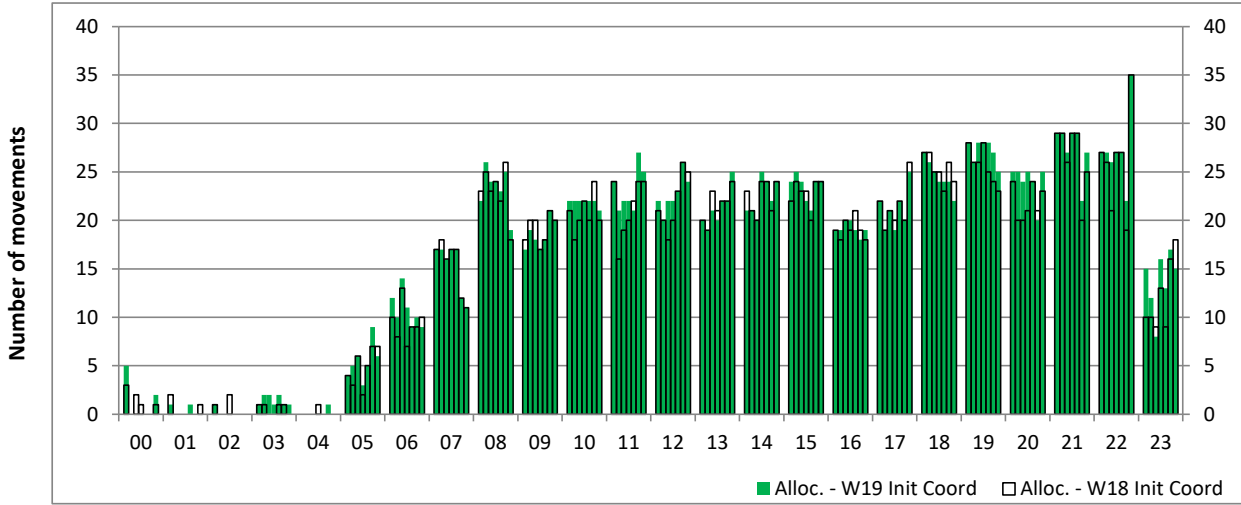
Peak Week - Runway Allocation Comparison

Comparison of W19 Init Coord vs. W18 Init Coord



Hourly Arrival Allocation

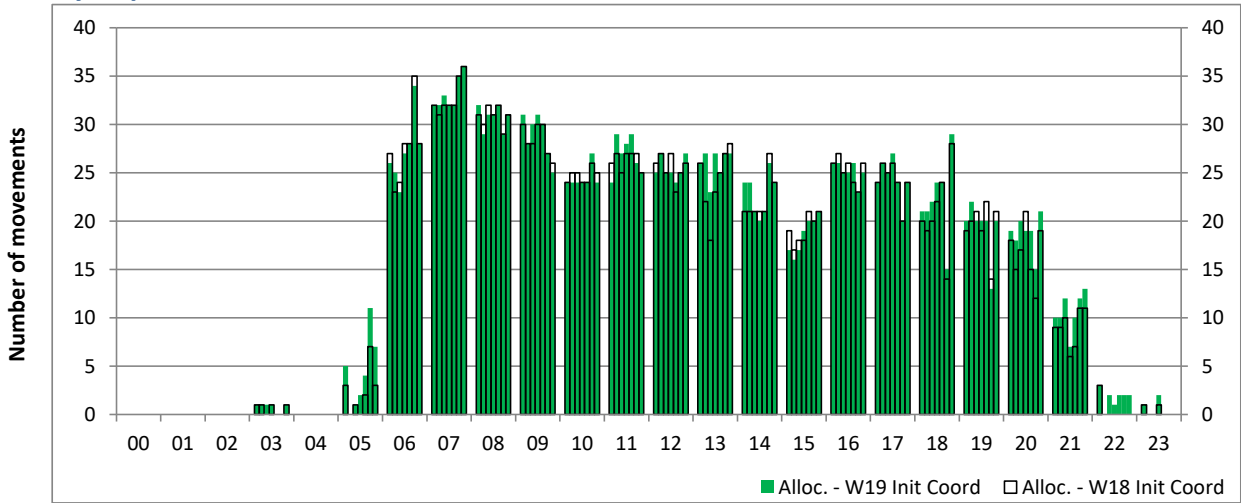
Time: UTC



Hour of day (24 hour format)

Hourly Departure Allocation

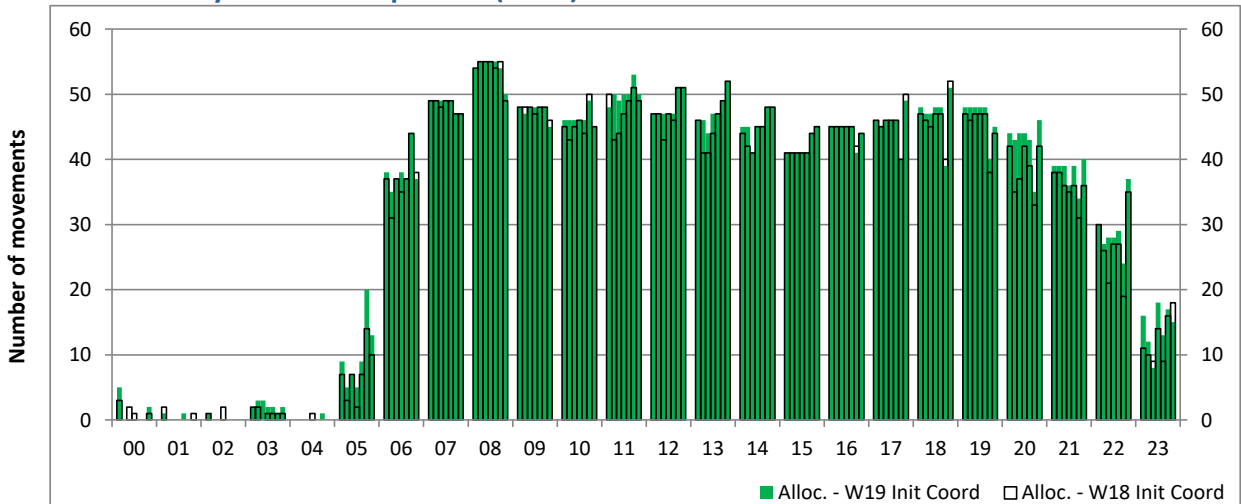
Time: UTC



Hour of day (24 hour format)

Combined Hourly Arrival & Departure (Total) Allocation

Time: UTC



Hour of day (24 hour format)

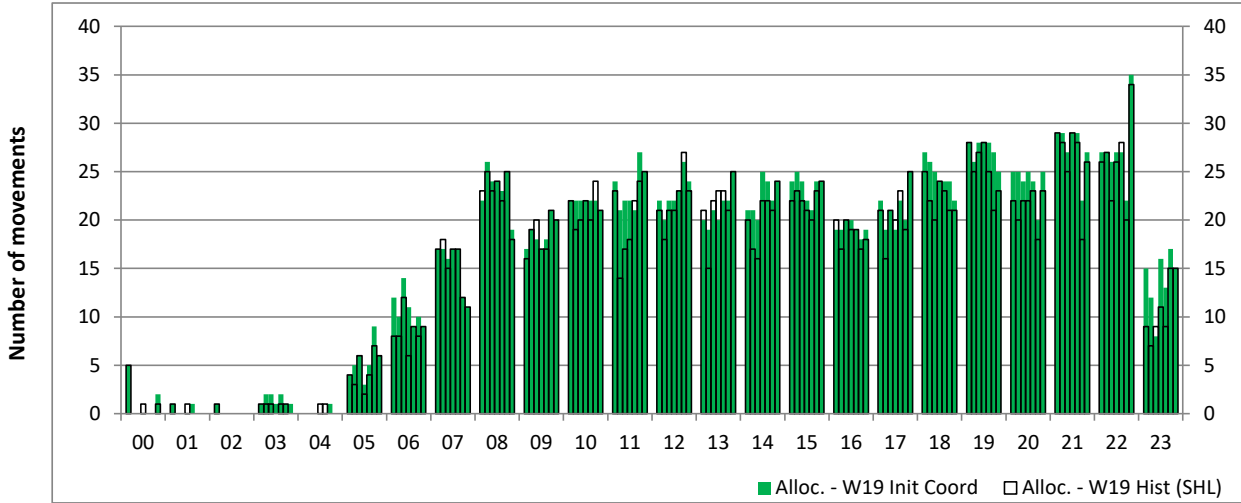
Peak Week - Runway Allocation Comparison

Comparison of W19 Init Coord vs. W19 Hist (SHL)



Hourly Arrival Allocation

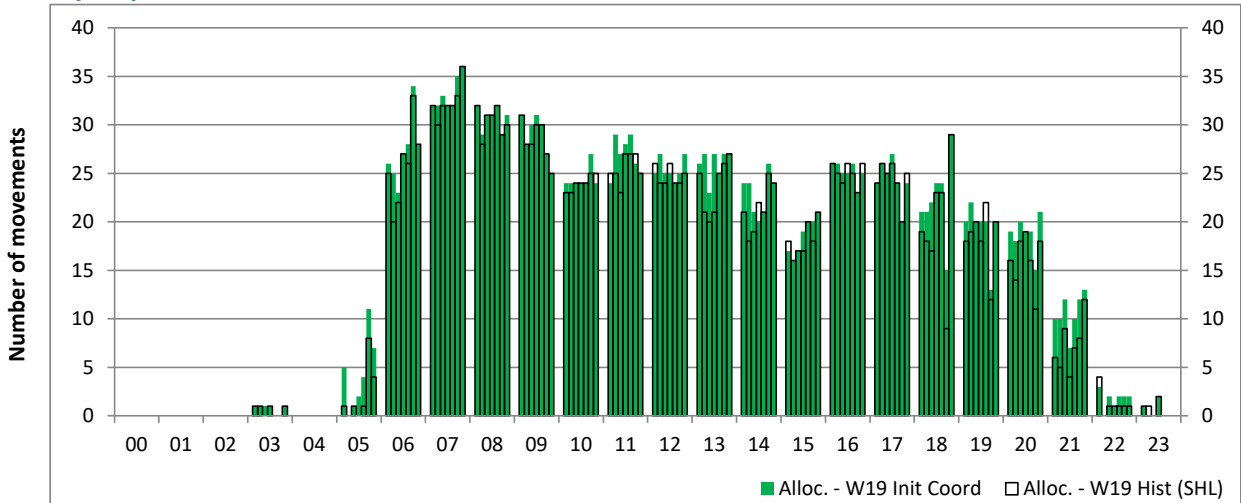
Time: UTC



Hour of day (24 hour format)

Hourly Departure Allocation

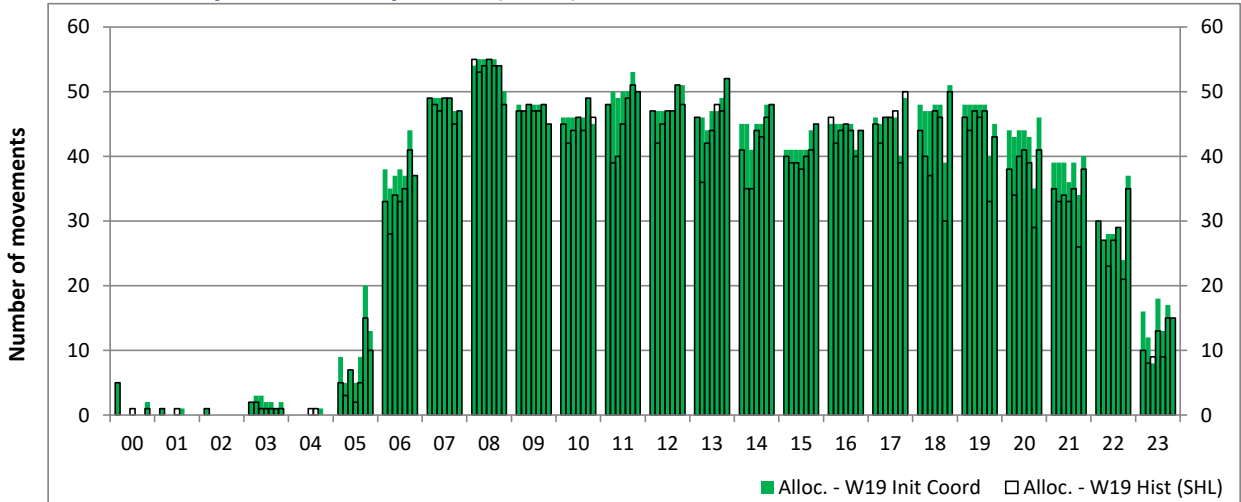
Time: UTC



Hour of day (24 hour format)

Combined Hourly Arrival & Departure (Total) Allocation

Time: UTC



Hour of day (24 hour format)

Peak Week - Passengers Histogram

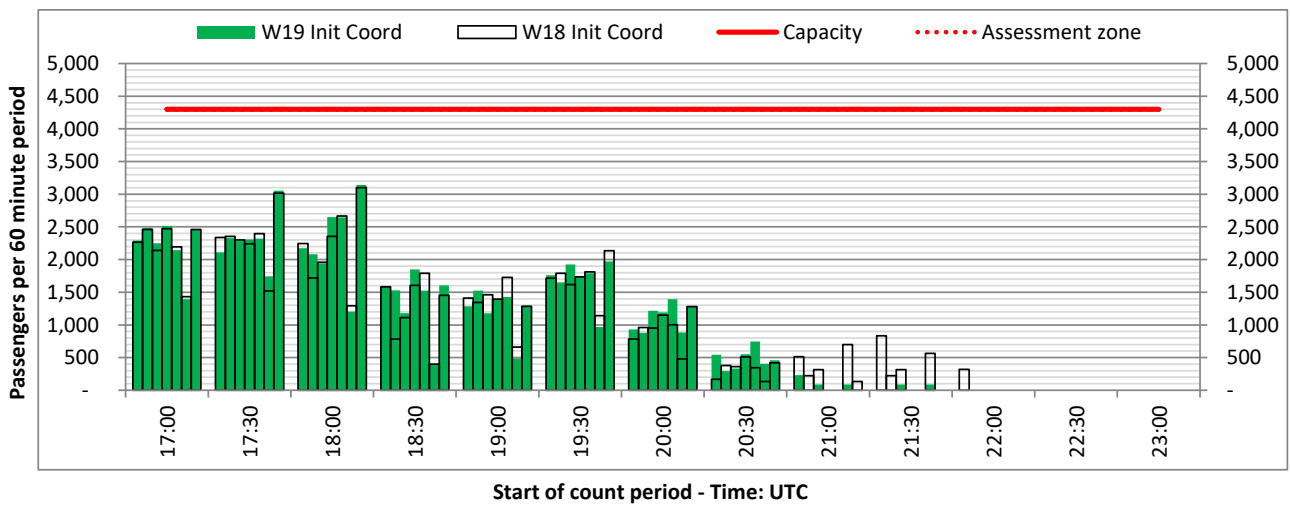
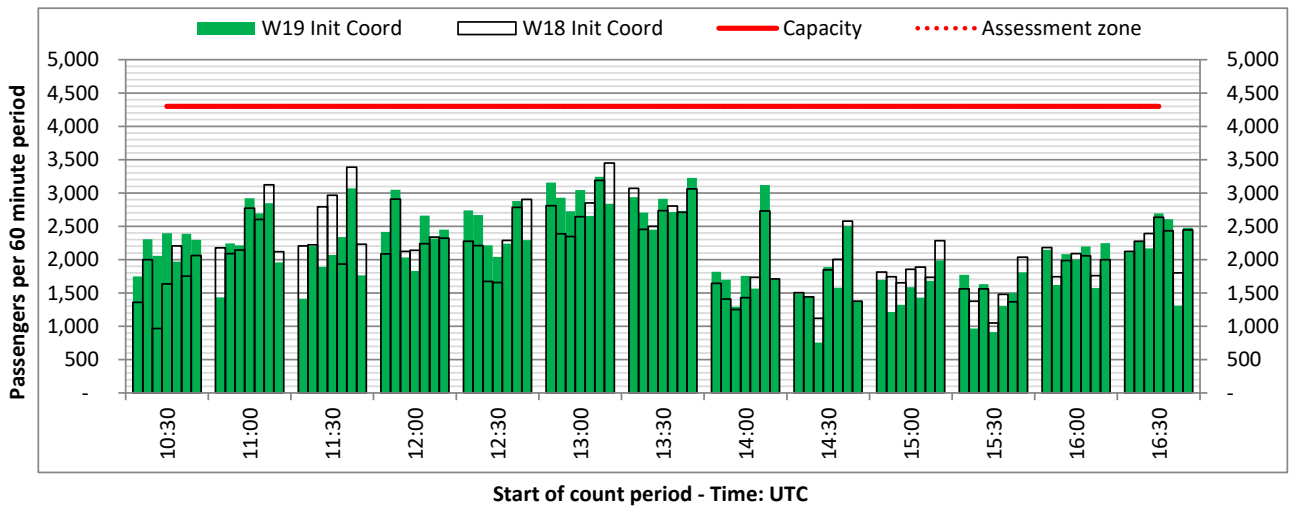
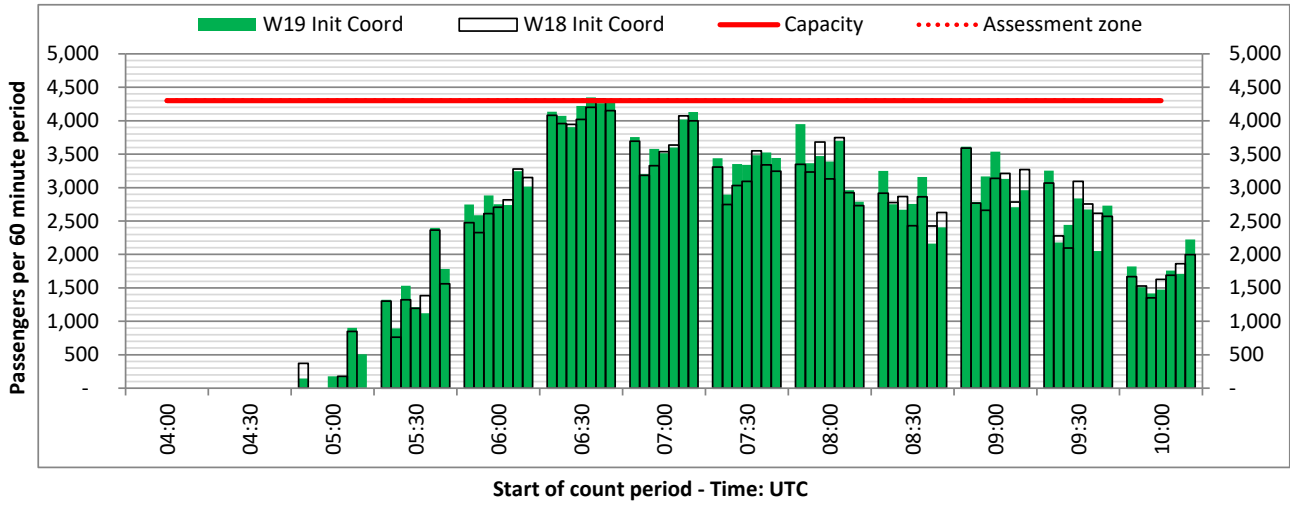
DEPARTURE - 60 minute count rolling every 30 mins (T60/30)



North Terminal

Operators: All Operators

Days: 1234567



Peak Week - Passengers Histogram

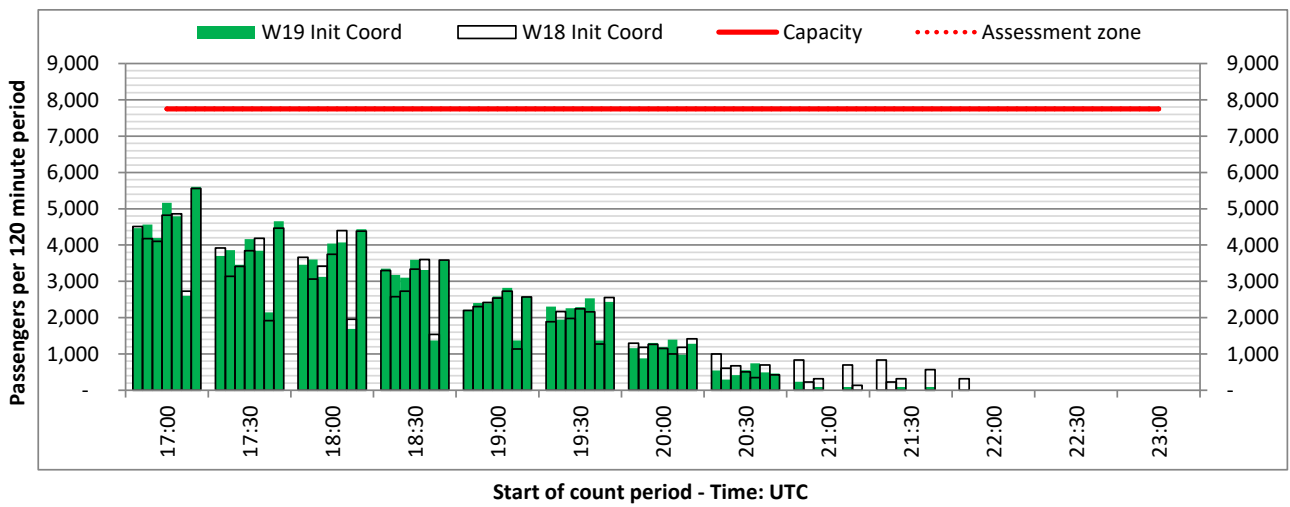
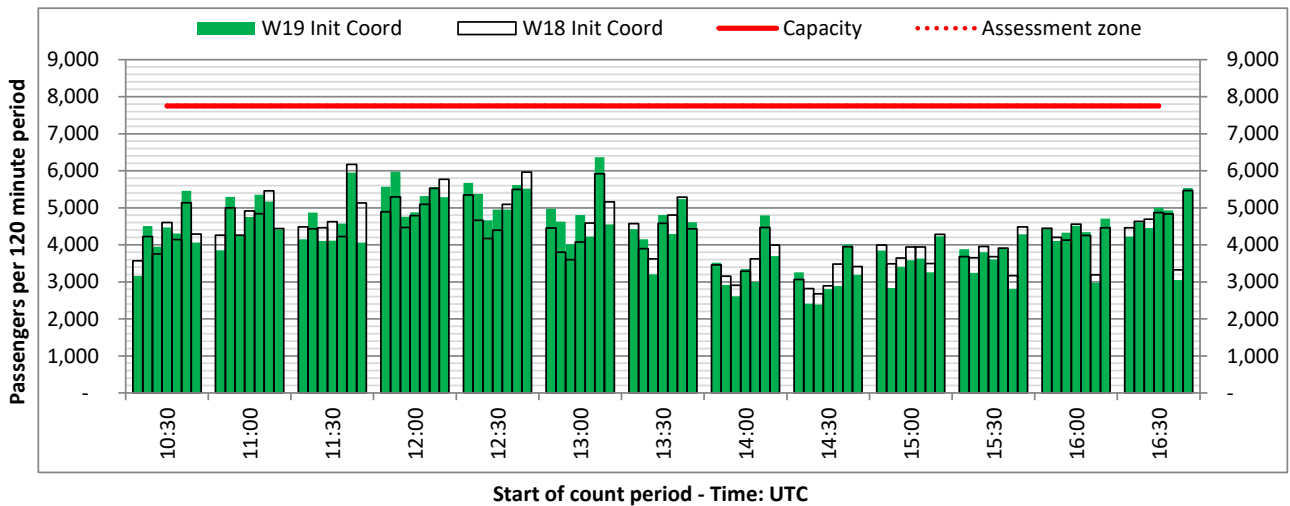
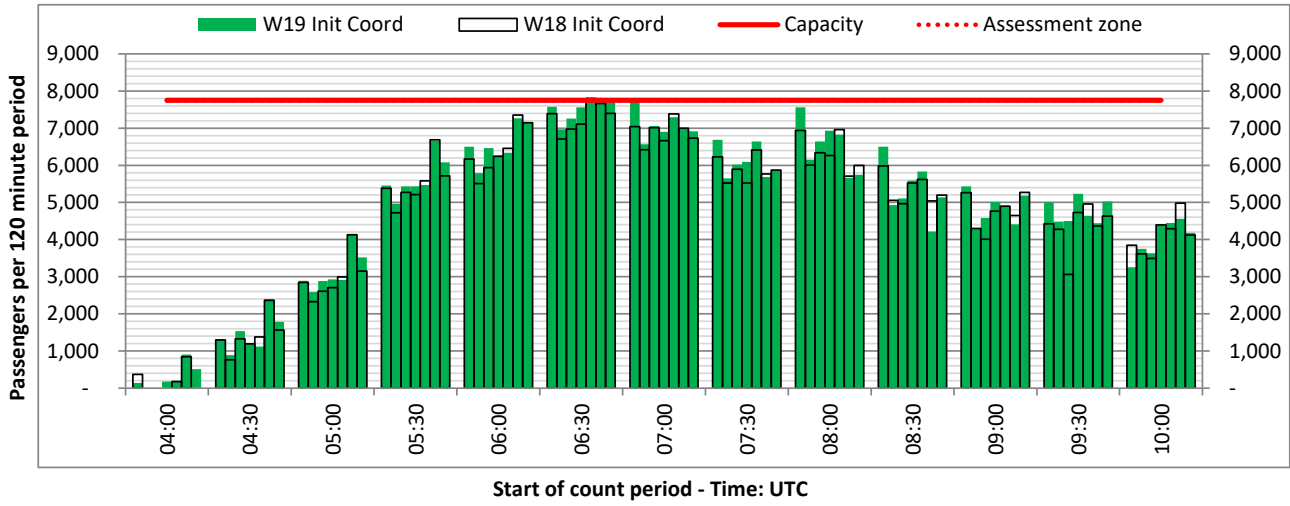
DEPARTURE - 120 minute count rolling every 30 mins (T120/30)



North Terminal

Operators: All Operators

Days: 1234567



Peak Week - Passengers Histogram

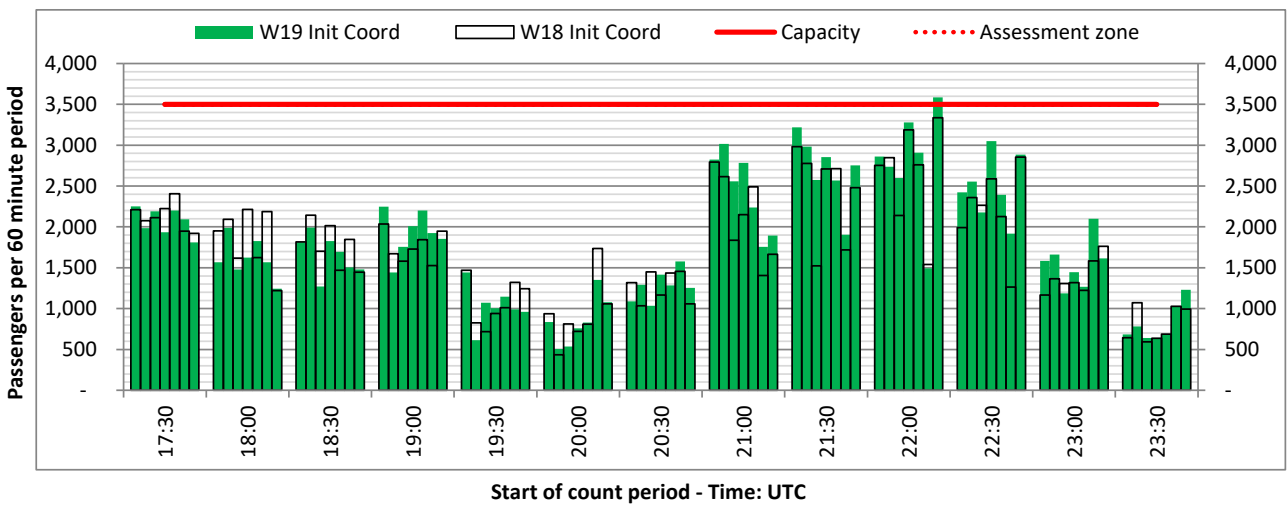
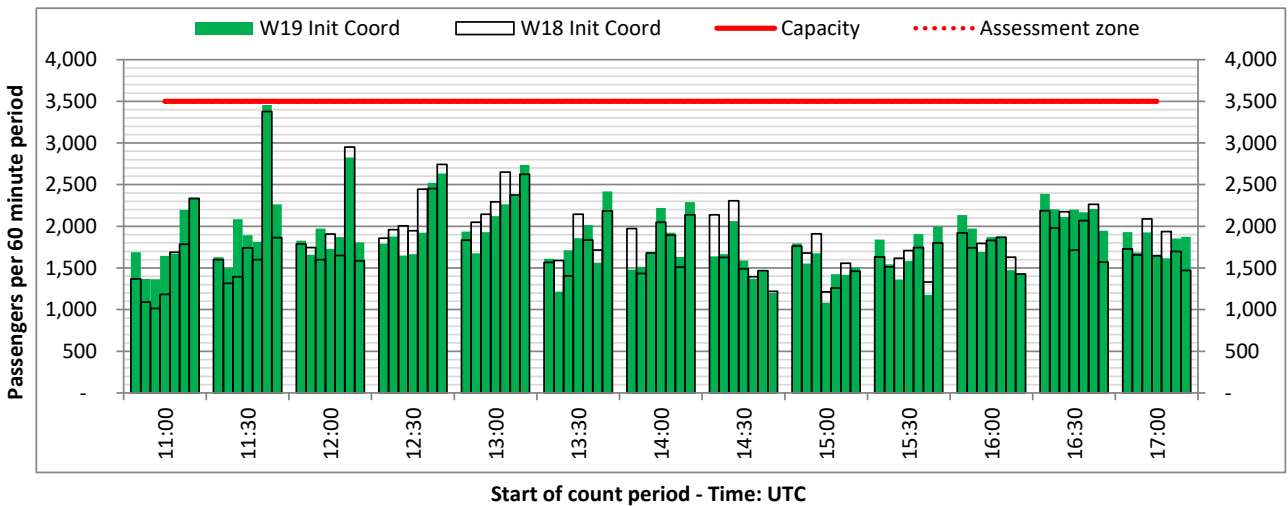
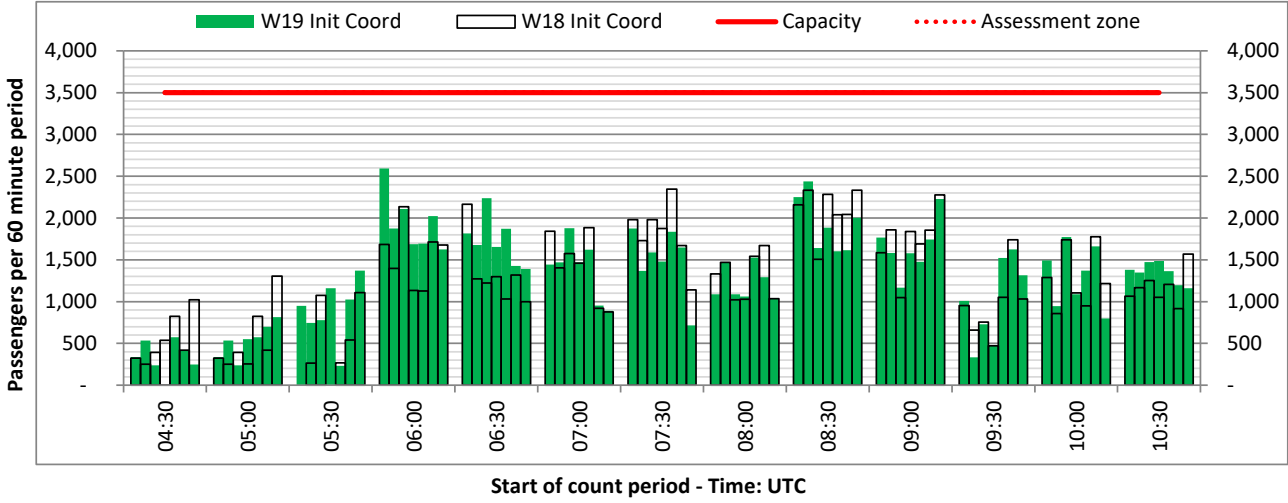
ARRIVAL - 60 minute count rolling every 30 mins (T60/30)



North International

Operators: All Operators

Days: 1234567



Peak Week - Passengers Histogram

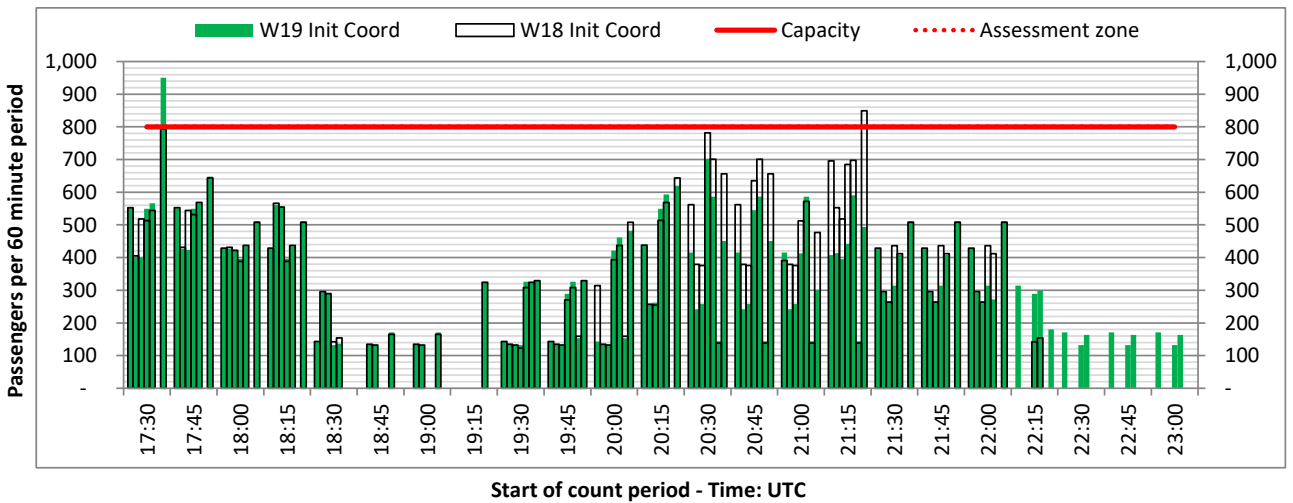
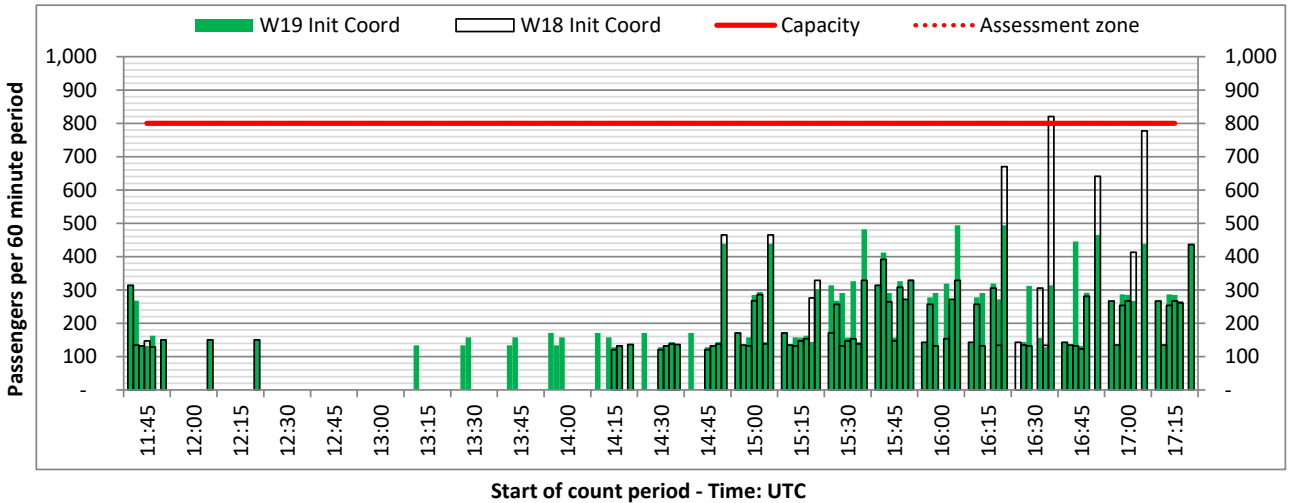
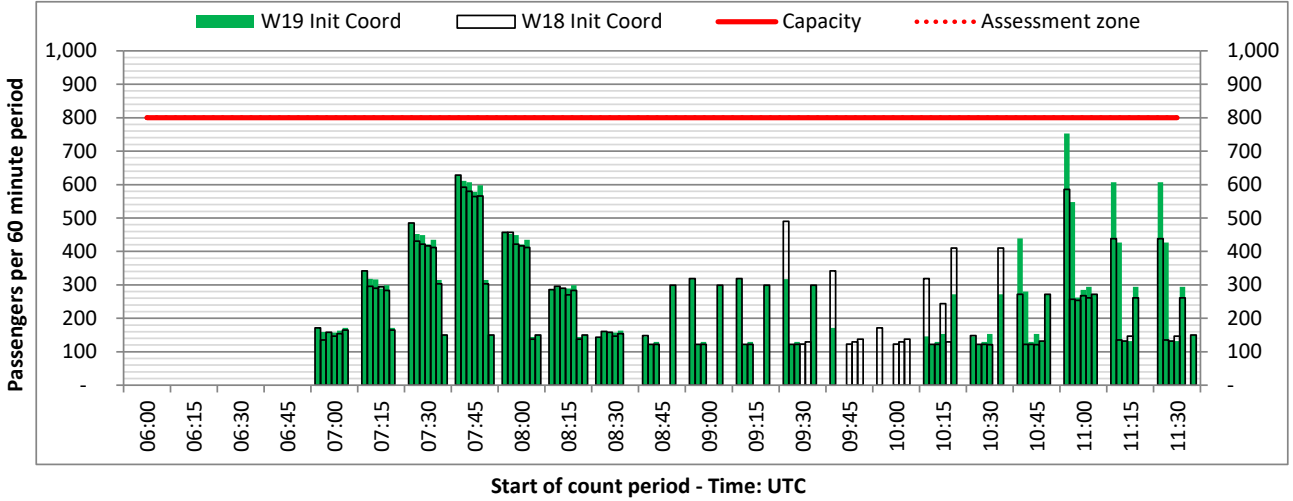
ARRIVAL - 60 minute count rolling every 15 mins (T60/15)



North Domestic

Operators: All Operators

Days: 1234567



Peak Week - Passengers Histogram

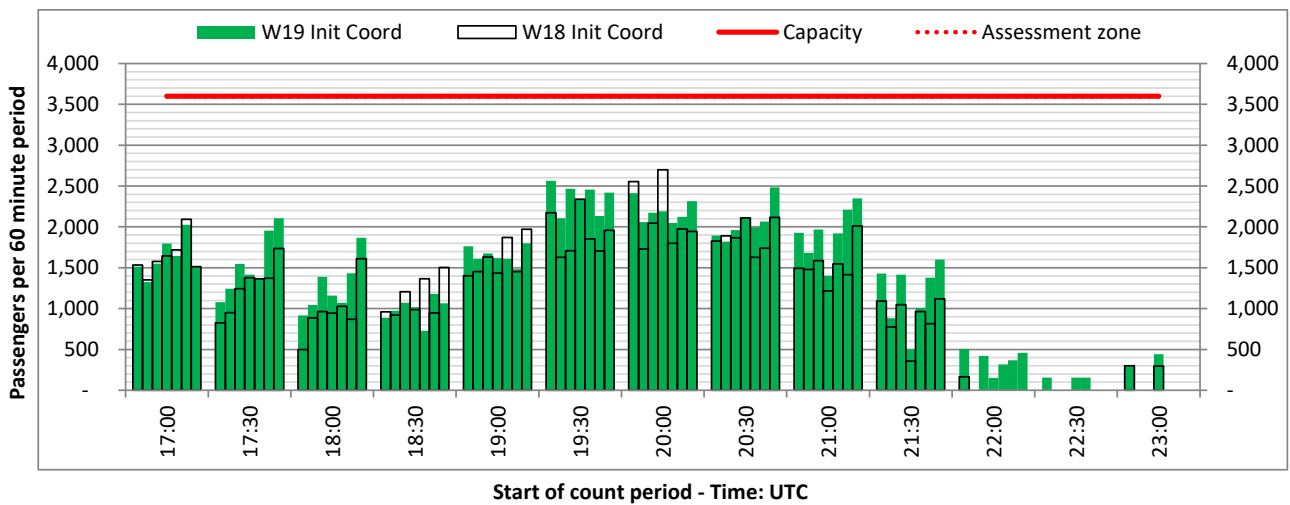
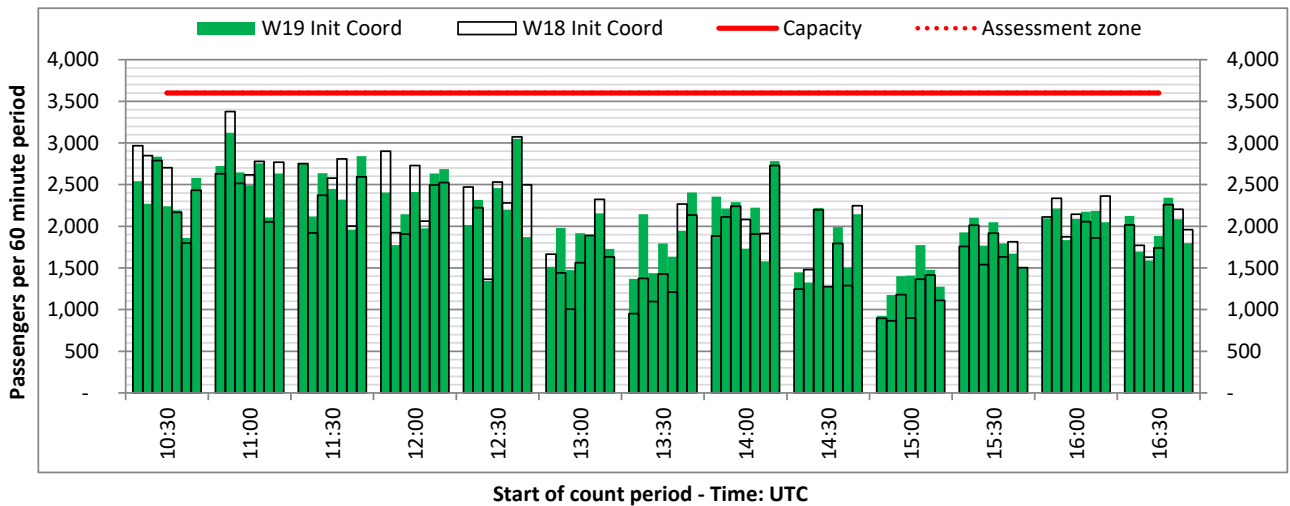
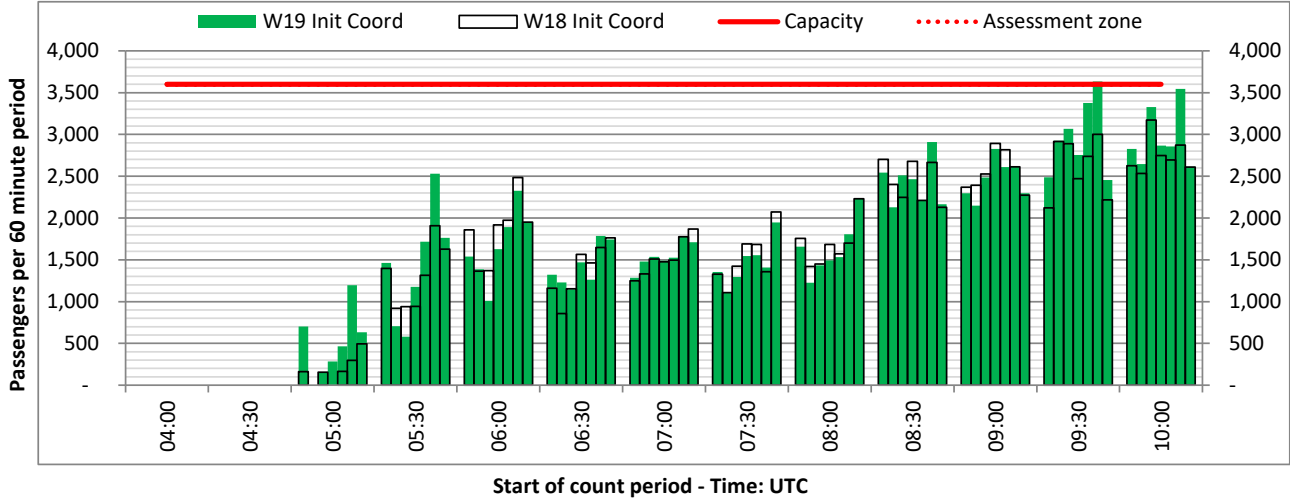
DEPARTURE - 60 minute count rolling every 30 mins (T60/30)



South Terminal

Operators: All Operators

Days: 1234567



Peak Week - Passengers Histogram

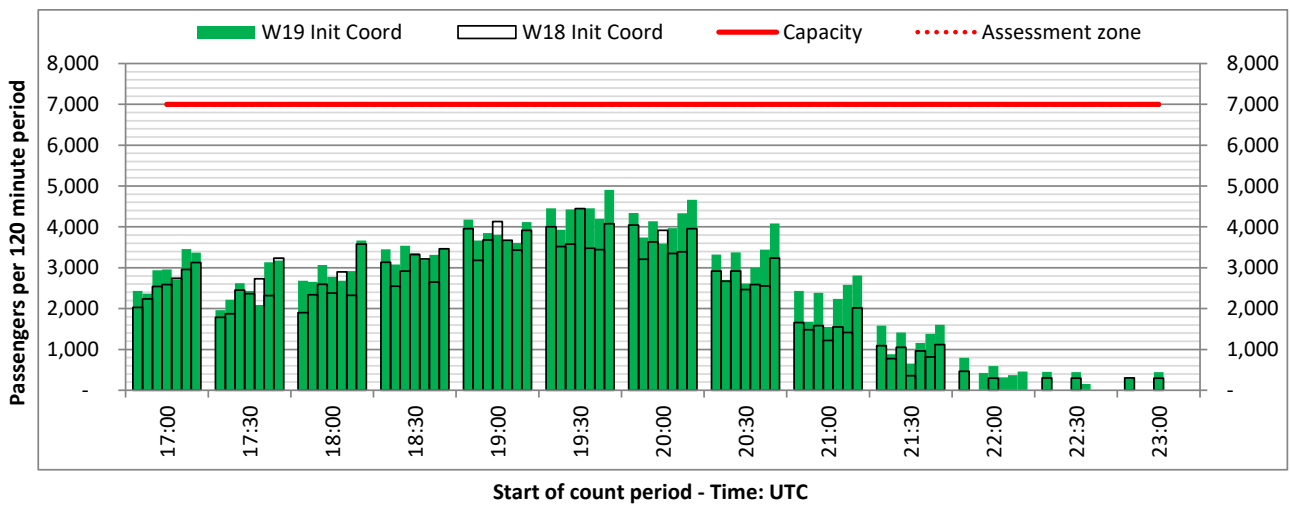
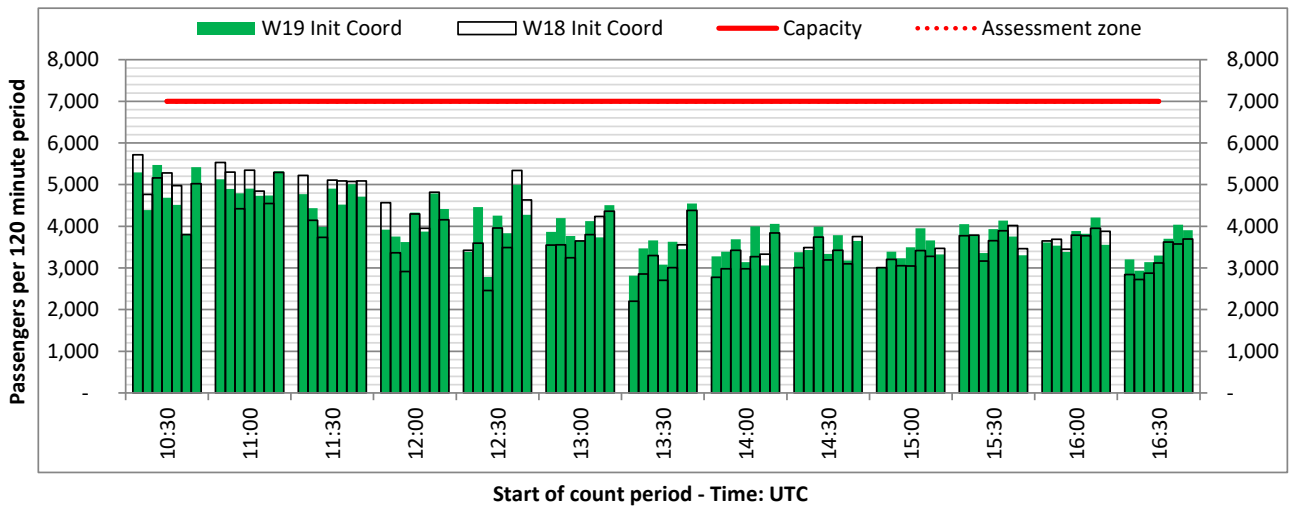
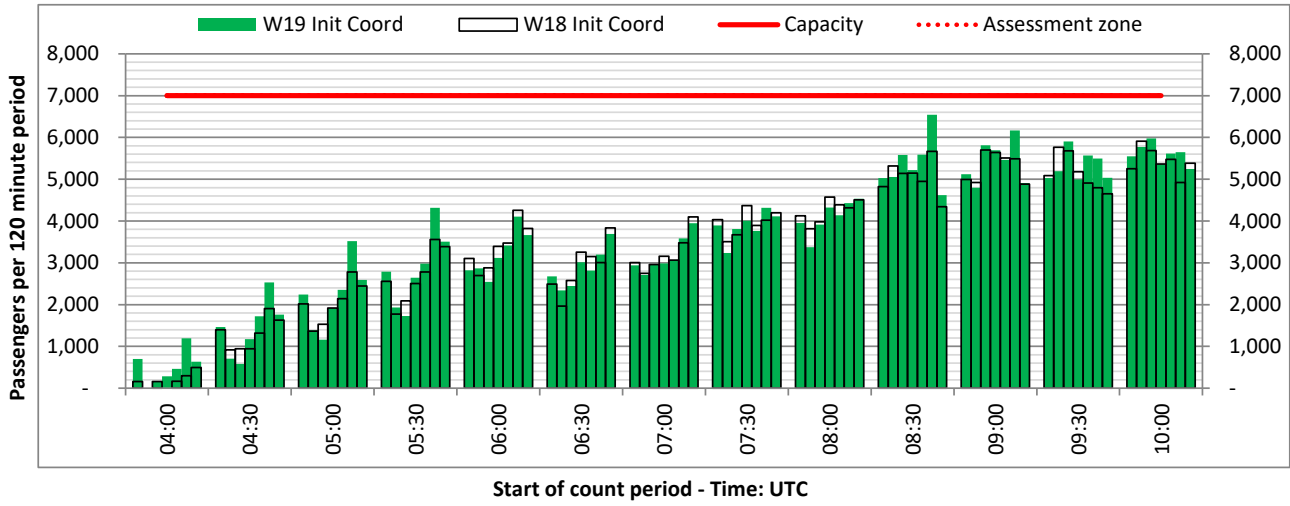
DEPARTURE - 120 minute count rolling every 30 mins (T120/30)



South Terminal

Operators: All Operators

Days: 1234567



Peak Week - Passengers Histogram

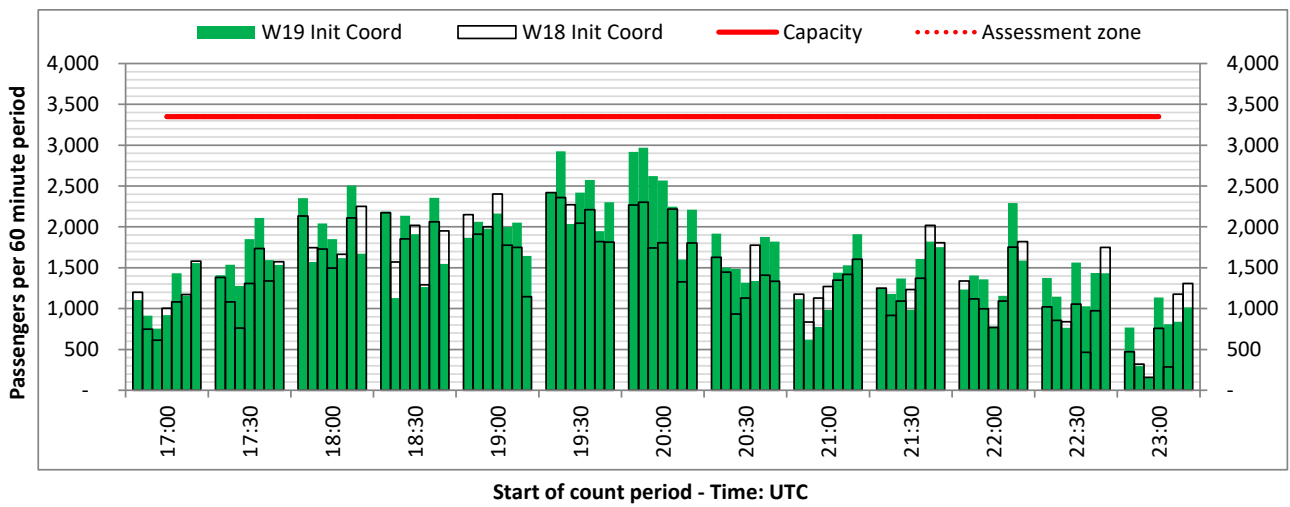
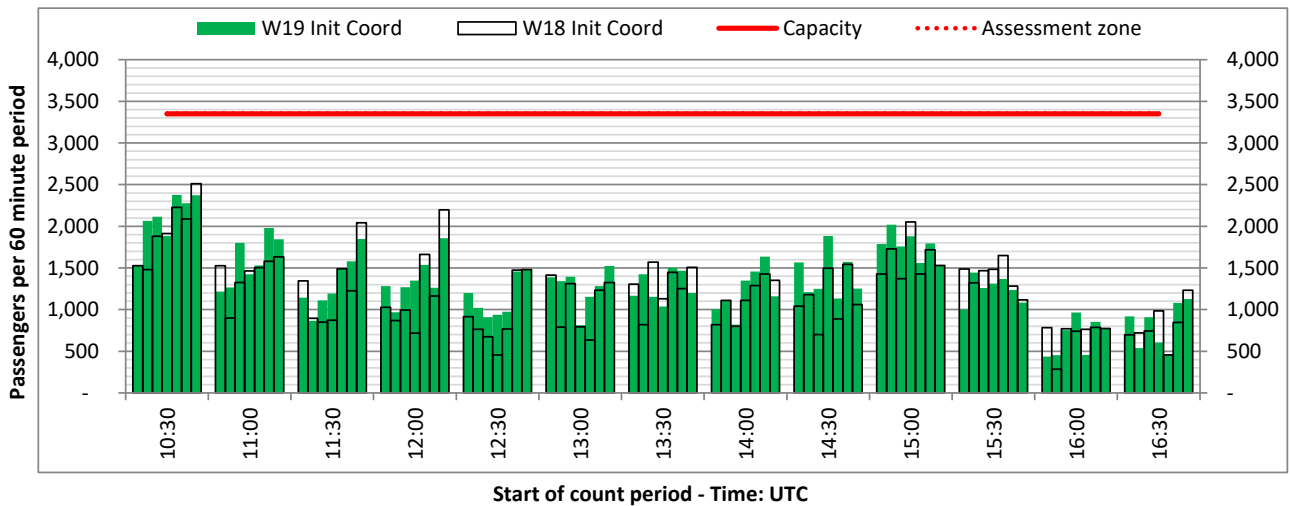
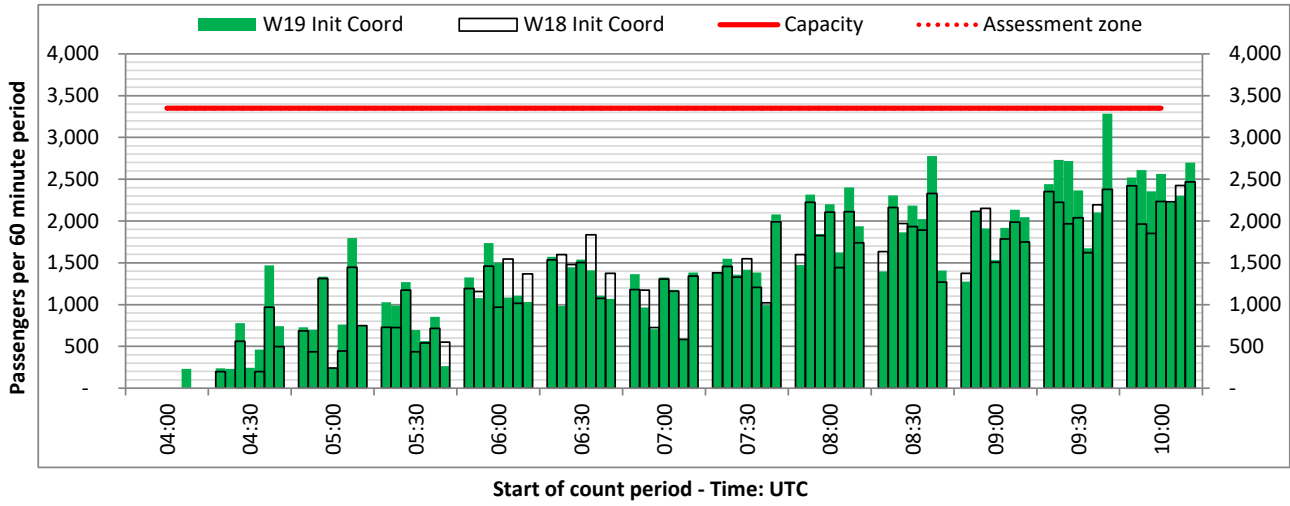
ARRIVAL - 60 minute count rolling every 30 mins (T60/30)



South International

Operators: All Operators

Days: 1234567



Peak Week - Passengers Histogram

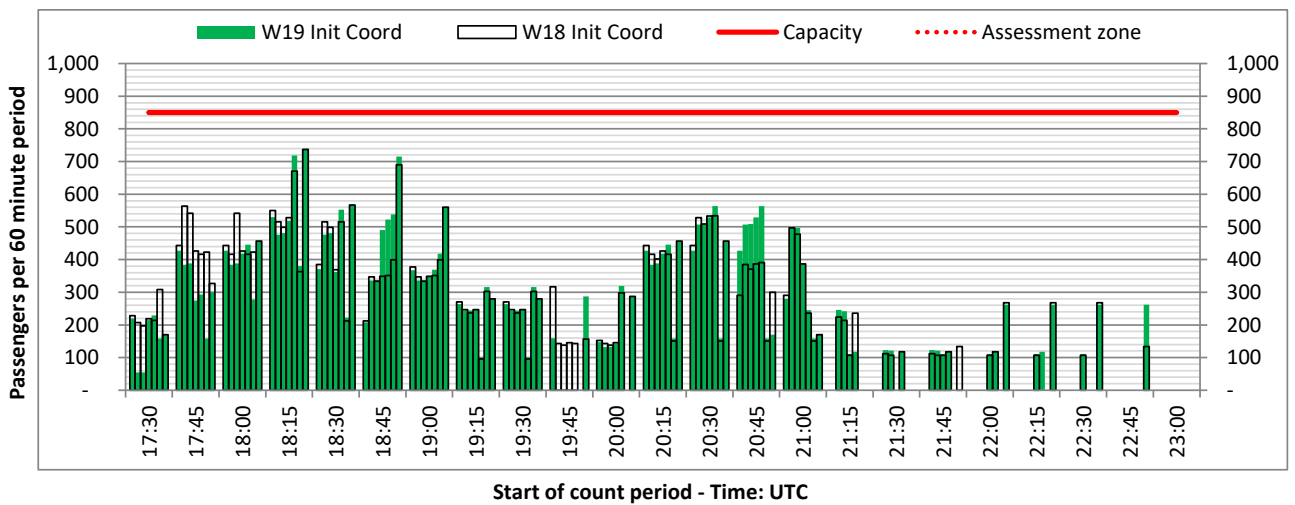
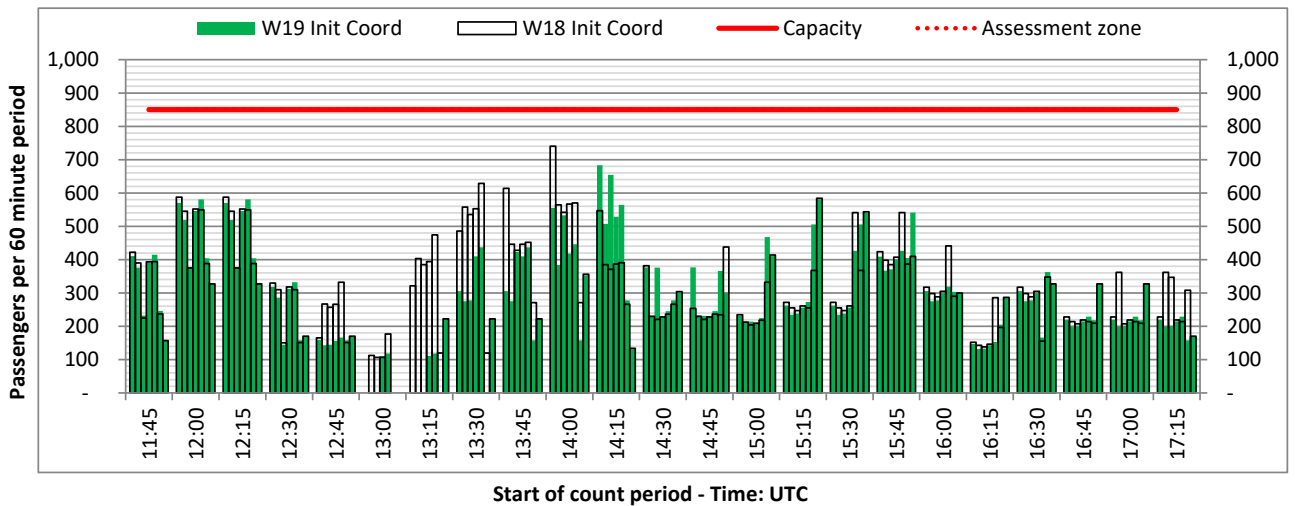
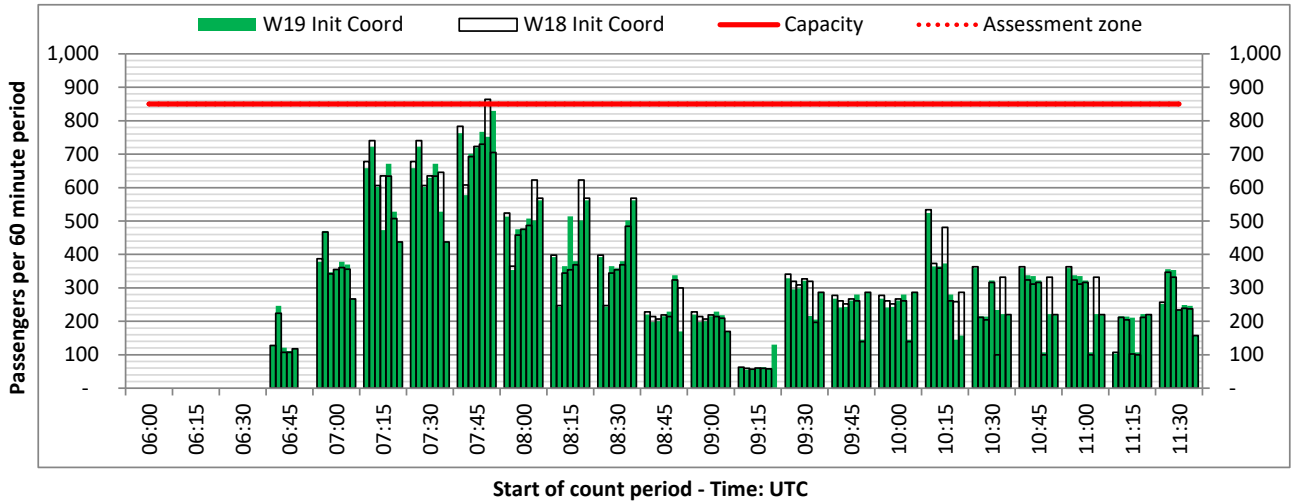
ARRIVAL - 60 minute count rolling every 15 mins (T60/15)



South Domestic

Operators: All Operators

Days: 1234567



Air Transport Movement (ATM)	Any aircraft movement which is either a scheduled or chartered passenger or cargo flight.
Common Travel Area (CTA)	Origin or Destination is in Republic of Ireland or the Channel Islands.
Demand	Unconstrained demand before any schedule adjustments have been made.
"Fill-in"	These are gaps in a historic series of slots which the carrier requests to "Fill-in" at Initial Submissions - Fill-ins will be recognisably part of the historic series and will have the same flight details to qualify as a "Fill-in".
Hist (SHL)	Snapshot of historic schedule rolled over from end of the previous equivalent season - as advised to airlines in the SHLs.
ICAO Size A	Aircraft with wingspan between 0.00m - 14.99m.
ICAO Size B	Aircraft with wingspan between 15.00m - 23.99m.
ICAO Size C	Aircraft with wingspan between 24.00m - 35.99m.
ICAO Size D	Aircraft with wingspan between 36.00m - 51.99m.
ICAO Size E	Aircraft with wingspan between 52.00m - 64.99m.
ICAO Size F	Aircraft with wingspan between 65.00m - 80.00m.
Init Coord	Snapshot of schedule immediately after Initial Coordination is completed - as advised to airlines in the SALs.
Passenger Air Transport Movement (PATM)	Any aircraft movement which is either a scheduled or chartered passenger flight.
Start	Snapshot of schedule shortly before the start of the scheduling season (exact date given below where used).
Time: Local	Times shown are in LOCAL time for the airport/scheduling season.
Time: UTC	Times shown are in Universal Time Constant (UTC).

Data snapshot descriptions

W18 Init Coord	W18 schedule as cleared on Thu 07-Jun-18.
W19 Hist (SHL)	W19 schedule as cleared on Mon 15-Apr-19.
W19 Init Coord	W19 schedule as cleared on Wed 05-Jun-19.

Peak Week	Peak week for W18 is Mon 17-Dec-18 to Sun 23-Dec-18. Peak week for W19 is Mon 16-Dec-19 to Sun 22-Dec-19.
------------------	--

For ACL use

	Airport-Season-Branch-Resource	From date	To date	Time
Full Season Rep 1	LGW-W18-SAL Premerge-Standard	Sun 28-Oct-2018	Sat 30-Mar-2019	UTC
Full Season Rep 2	LGW-W19-SHL-Standard	Sun 27-Oct-2019	Sat 28-Mar-2020	UTC
Full Season Rep 3	LGW-W19-SAL Premerge-Standard	Sun 27-Oct-2019	Sat 28-Mar-2020	UTC
	Airport-Season-Branch-Resource	From date	To date	Time
Peak Week Rep 1	LGW-W18-SAL Premerge-Standard	Mon 17-Dec-2018	Sun 23-Dec-2018	UTC
Peak Week Rep 2	LGW-W19-SHL-Standard	Mon 16-Dec-2019	Sun 22-Dec-2019	UTC
Peak Week Rep 3	LGW-W19-SAL Premerge-Standard	Mon 16-Dec-2019	Sun 22-Dec-2019	UTC